

## General Description

The SM806075 is a member of the ClockWorks® FLEX family of devices from Microchip and provides an extremely low-noise timing solution. It is based upon a unique PLL architecture that provides very-low phase noise.

The device operates from a 2.5V or 3.3V power supply.

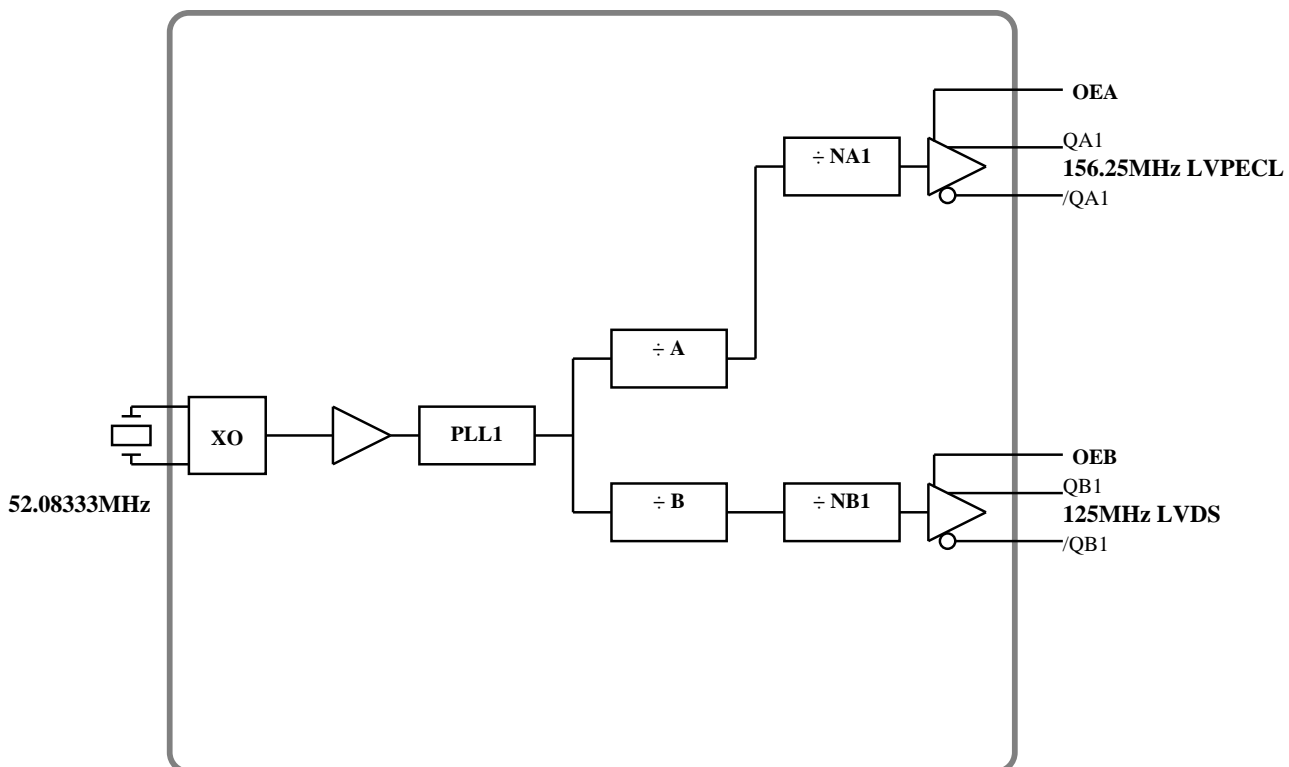
## Applications

- Gigabit Ethernet
- 10/40/400 Gigabit Ethernet
- Storage
- Fibre Channel 10G/12G SERDES

## Features

- Generates 2 output clocks
- Frequency and output logic:
  - 156.25MHz LVPECL x 1
  - 125MHz LVDS x 1
- 52.08333MHz Crystal Input
- OE on banks A and B
- Typical phase noise:
  - 78fs (Integration range: 12kHz-20MHz)
- On-chip power supply regulation for excellent board level power supply noise immunity
- No external crystal oscillator capacitors required
- 2.5V or 3.3V operating power supply
- Industrial temperature range
- 24-pin 4x4x.85mm VQFN

## Block Diagram



ClockWorks is a registered trademark of Microchip Technology Inc.

Microchip Technology Inc.

<http://www.microchip.com>

December 10, 2024  
806003-14363-Rev 0.7

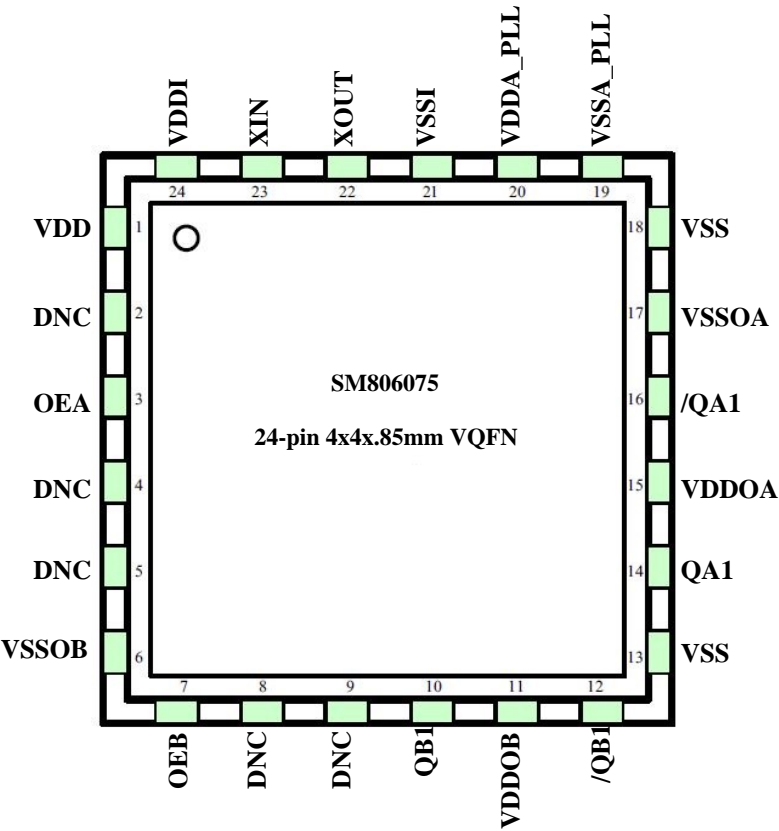
M9999-121024-A  
[tcghelp@microchip.com](mailto:tcghelp@microchip.com)

Ordering Information

| Ordering Part Number | Marking | Shipping      | Ambient Temperature Range | Package               |
|----------------------|---------|---------------|---------------------------|-----------------------|
| SM806075UMG          | 806075  | Tube          | -40°C to +85°C            | 24-pin 4x4x.85mm VQFN |
| SM806075UMG TR       | 806075  | Tape and Reel | -40°C to +85°C            | 24-pin 4x4x.85mm VQFN |

Devices are Green and RoHS compliant. Sample material may have only a partial top mark.

Pin Configuration



## Pin Description

| Pin Number | Pin Name  | Pin Type | Pin Level | Pin Function  |
|------------|-----------|----------|-----------|---|
| 1          | VDD       | PWR      |           | Power Supply  |
| 2, 4, 5    | DNC       |          |           | Do not connect anything to these pins   |
| 3          | OEA       | I, SE    | LVC MOS   | Output Enable, QA outputs disable to tri-state,<br>0 = Disabled, 1 = Enabled, on-chip 75k Ohms Internal Pull-Up |
| 6          | VSSOB     | PWR      |           | Ground Return Path for the Bank B Output Drivers  |
| 7          | OEB       | I, SE    | LVC MOS   | Output Enable, QB outputs disable to tri-state,<br>0 = Disabled, 1 = Enabled, on-chip 75k Ohms Internal Pull-Up |
| 8          | DNC       |          |           | Do not connect  |
| 9          | DNC       |          |           | Do not connect  |
| 10, 12     | QB1, /QB1 | O, Diff  | LVDS      | Clock Output QB1 Frequency = 125MHz   |
| 11         | VDDOB     | PWR      |           | Power Supply for Outputs QB   |
| 13, 18     | VSS       | PWR      |           | Power Supply Ground   |
| 14, 16     | QA1, /QA1 | O, Diff  | LVPECL    | Clock Output QA1 Frequency = 156.25MHz  |
| 15         | VDDOA     | PWR      |           | Power Supply for Outputs QA   |
| 17         | VSSOA     | PWR      |           | Ground Return Path for the Bank A Output Drivers  |
| 19         | VSSA_PLL  | PWR      |           | Analog Power Return for PLL   |
| 20         | VDDA_PLL  | PWR      |           | Analog Power Supply for PLL   |
| 21         | VSSI      | PWR      |           | Ground for Reference Input Circuits and Crystal Oscillator  |
| 22, 23     | XOUT, XIN | I/O, SE  |           | Crystal Reference Input/Output = 52.08333MHz,<br>no external load caps needed.                                  |
| 24         | VDDI      | PWR      |           | Power Supply for Reference Input Circuits and Crystal Oscillator  |

## Absolute Maximum Ratings<sup>1</sup>

Supply Voltage (VDD, VDDA, VDDI, VDDO).....+4.6V  
 Input Voltage (VIN).....-0.50V to +4.6V  
 ESD Machine Model.....200V  
 ESD Human Body Model.....2kV

## Operating Ratings<sup>2</sup>

Supply Voltage (VDD, VDDO)....+2.375V to +3.465V

## Electrical Characteristics

Typical values are TA = 25°C, min/max across -40°C ≤ TA ≤ +85°C, unless otherwise noted.

| Symbol    | Parameter                        | Condition                        | Min.           | Typ.       | Max.           | Units |
|-----------|----------------------------------|----------------------------------|----------------|------------|----------------|-------|
| VDD, VDDO | Supply Voltage                   | 2.5V Operation<br>3.3V Operation | 2.375<br>3.135 | 2.5<br>3.3 | 2.625<br>3.465 | V     |
| VDDI      | Analog & I/O Supply              |                                  | 2.375          |            | 3.465          | V     |
| VDDA      | PLL Core                         |                                  | 2.375          |            | 3.465          | V     |
| IDDA      | PLL Core Current Consumption     |                                  |                |            | 60             | mA    |
| IDDI      | Analog & I/O Current             |                                  |                |            | 20             | mA    |
| IDDO      | Output Stage Current Consumption | Per output bank, unloaded        |                |            | 70             | mA    |
| IDD       | SPI and Miscellaneous Logic      |                                  |                |            | 8              | mA    |

## Crystal Characteristics

| Parameter                          | Condition                     | Min.                           | Typ.     | Max. | Units |
|------------------------------------|-------------------------------|--------------------------------|----------|------|-------|
| Mode of Oscillation                |                               | Fundamental, Parallel Resonant |          |      |       |
| Frequency                          | Note 3                        |                                | 52.08333 |      | MHz   |
| Equivalent Series Resistance (ESR) |                               |                                |          | 60   | Ohms  |
| Load Capacitance, CL               | 8.0 pF parallel load, typical |                                | 8        | ±0.5 | pF    |
| Shunt Capacitor, CO                |                               |                                | 0.3      | 1.5  | pF    |
| Correlation Drive Level            | EIA-512                       |                                | 10       | 200  | μW    |

### Notes:

- Exceeding the absolute maximum ratings may damage the device.
- The device is not guaranteed to function outside its operating ratings.

## LVPECL DC Electrical Characteristics

VDDcore= VDD = VDDO = 3.3V  $\pm$ 5% or 2.5V  $\pm$ 5%, TA = -40°C to +85°C, unless otherwise noted.

RL = 50 Ohms to VDDO - 2V.

| Symbol | Parameter                   | Condition                  | Min.        | Typ.        | Max.       | Units |
|--------|-----------------------------|----------------------------|-------------|-------------|------------|-------|
| VOH    | Output High Voltage         | 50 Ohms to VDDO - 2V       | VDDO - 1.35 | VDDO - 1.01 | VDDO - 0.8 | V     |
| VOL    | Output Low Voltage          | 50 Ohms to VDDO - 2V       | VDDO - 2    | VDDO - 1.78 | VDDO - 1.6 | V     |
| Vswing | Peak-to-Peak Output Voltage | Figure "Duty Cycle Timing" | 0.65        | 0.77        | 0.95       | V     |

## LVDS DC Electrical Characteristics

VDDcore= VDD = VDDO = 3.3V  $\pm$ 5% or 2.5V  $\pm$ 5%, TA = -40°C to +85°C, unless otherwise noted.

RL = 100 Ohms between Q and /Q.

| Symbol | Parameter                   | Condition                  | Min.  | Typ.  | Max.  | Units |
|--------|-----------------------------|----------------------------|-------|-------|-------|-------|
| VOD    | Differential Output Voltage | Figure "Duty Cycle Timing" | 245   | 350   | 454   | mV    |
| VCM    | Common Mode Voltage         |                            | 1.125 | 1.2   | 1.375 | V     |
| VOH    | Output High Voltage         |                            | 1.248 | 1.375 | 1.602 | V     |
| VOL    | Output Low Voltage          |                            | 0.898 | 1.025 | 1.252 | V     |

## AC Electrical Characteristics

VDD = VDDO½ = 3.3V ±5% or 2.5V ±5%

VDD = 3.3V ±5%, VDDO½ = 3.3V ±5% or 2.5V ±5%

TA = -40°C to +85°C

| Symbol  | Parameter                           | Condition                                     | Min.     | Typ.                  | Max.       | Units    |
|---------|-------------------------------------|---|----------|-----------------------|------------|----------|
| FIN     | Input Frequency                     | XO  |          | 52.08333              |            | MHz      |
| FOUT    | Output Frequency                    | LVPECL, LVDS                                  |          | 156.25 x 1<br>125 x 1 |            | MHz      |
| TR/TF   | Output Rise/Fall time <sup>3</sup>  | LVPECL output<br>LVDS output                  | 85<br>85 | 135<br>140            | 350<br>300 | ps<br>ps |
| ODC     | Output Duty Cycle                   | <400MHz output frequencies                    | 48       | 50                    | 52         | %        |
| Tpd     | Input-to-Input<br>Propagation Delay | ZDB mode<br>Generator/Bypass mode             | -100     | 4                     | 100        | ps<br>ns |
| Tskew   | Output-to-Output Skew               | Notes 4, 5<br>Same output bank                |          |                       | 50         | ps       |
| Tlock   | PLL Lock Time                       |   |          | 5                     | 20         | ms       |
| Tjit(Ø) | RMS Phase Noise                     | Notes 6, 7<br>Integration range (12kHz-20MHz) |          | 78                    |            | fs       |

## Temperature Specifications

| Parameter                                    | Sym. | Min. | Typ. | Max. | Units | Conditions     |
|--|------|------|------|------|-------|----------------|
| <b>Temperature Ranges</b>                    |      |      |      |      |       |                |
| Ambient Temperature Range                    | Ta   | -40  |      | +85  | °C    |                |
| Lead Temperature                             |      |      |      | +260 | °C    | Soldering, 20s |
| Case Temperature                             |      |      |      | +115 | °C    |                |
| Storage Temperature Range                    | Ts   | -65  |      | +150 | °C    |                |
| <b>Package Thermal Resistances (Note 8)</b>  |      |      |      |      |       |                |
| Junction Thermal Resistance, 4 x 4 VQFN-24Ld | Tja  |      | 25   |      | °C/W  | Still-Air      |

### Notes:

- See Figure 'All Outputs Rise/Fall Time'
- Output-to-output skew is defined as skew between outputs at the same supply voltage and with equal load conditions. It is measured at the output differential crossing points.
- Output-to-output skew is only defined for outputs in the same PLL bank [A:B, C:D] with the same output logic type setting.
- All phase noise measurements were taken with an Agilent 5052B phase noise system.
- Measured using a 52.08333MHz crystal as the input reference source.
- Package thermal resistance assumes the exposed pad is soldered (or equivalent) to the device's most negative potential on the PCB.

## Application Information

### Crystal Layout

Keep the layers under the crystal as open as possible and do not place switching signals or noisy supplies under the crystal. Crystal load capacitance is built inside the die, so no external capacitance is needed. See the *Quartz Crystals and Microchip ICs* application note ANTC207 for further details. If you need help selecting a suitable crystal for your application, contact Microchip's TCG applications group at: [tcghelp@microchip.com](mailto:tcghelp@microchip.com)

### Output Traces

Design the traces for the output signals according to the output logic requirements. If LVCMOS is unterminated, add a 30 Ohms resistor in series with the output, as close as possible to the output pin and start a 50 Ohms trace on the other side of the resistor.

For differential traces you can either use a differential design or two separate 50 Ohms traces. For EMI reasons, it is better to use a balanced differential design.

LVDS can be AC coupled or DC coupled to its termination.

### Power Supply Filtering Recommendations

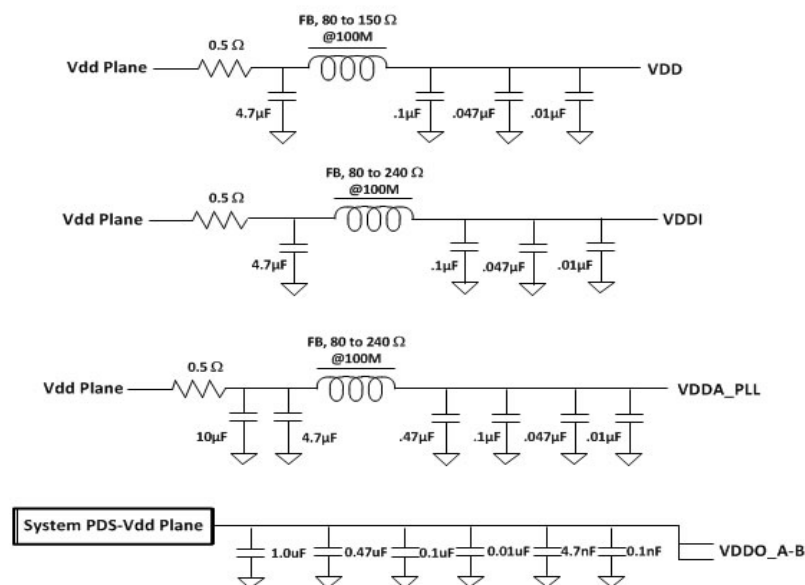


Figure 1. Recommended Power Supply Filtering

- Use the power supply filtering shown in above figure for VDD, VDDA\_PLL, VDDI.
- Connect the VDDO pins directly to the VDD power plane.
- Connect all VSS pins directly to the ground power plane.
- Recommended ferrite bead properties are 80 Ohms to 240 Ohms @100MHz impedance and >250mA saturation current.
- To improve power supply filtering beyond what a ferrite bead can provide, Microchip's Ripple Blocker™ provides a solution. MIC94300 or MIC94310 are recommended parts. The filter circuit with Ripple Blocker is shown in below figure and can be used for any of the above VDD sections.
- Do not use Y5V or Z5U capacitors.

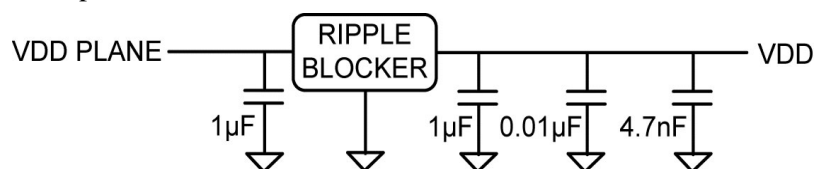


Figure 2. Power Supply Filtering with Ripple Blocker

## Timing Diagrams



Figure 3. Duty Cycle Timing



Figure 4. All Outputs Rise/Fall Time

## RMS Phase/Noise/Jitter



Figure 5. RMS Phase/Noise/Jitter

## Crystal Input Interface

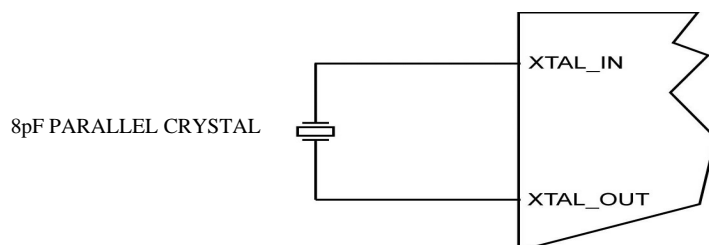


Figure 6. Crystal Input Interface



## Output Termination

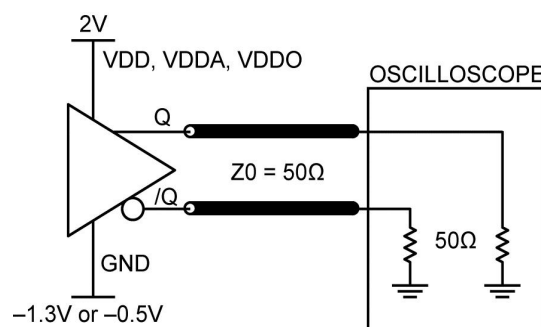


Figure 7. LVPECL Output Load and Test Circuit

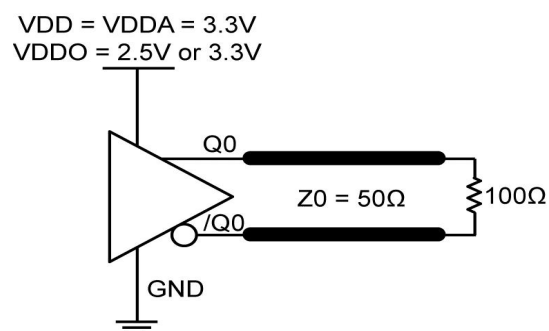


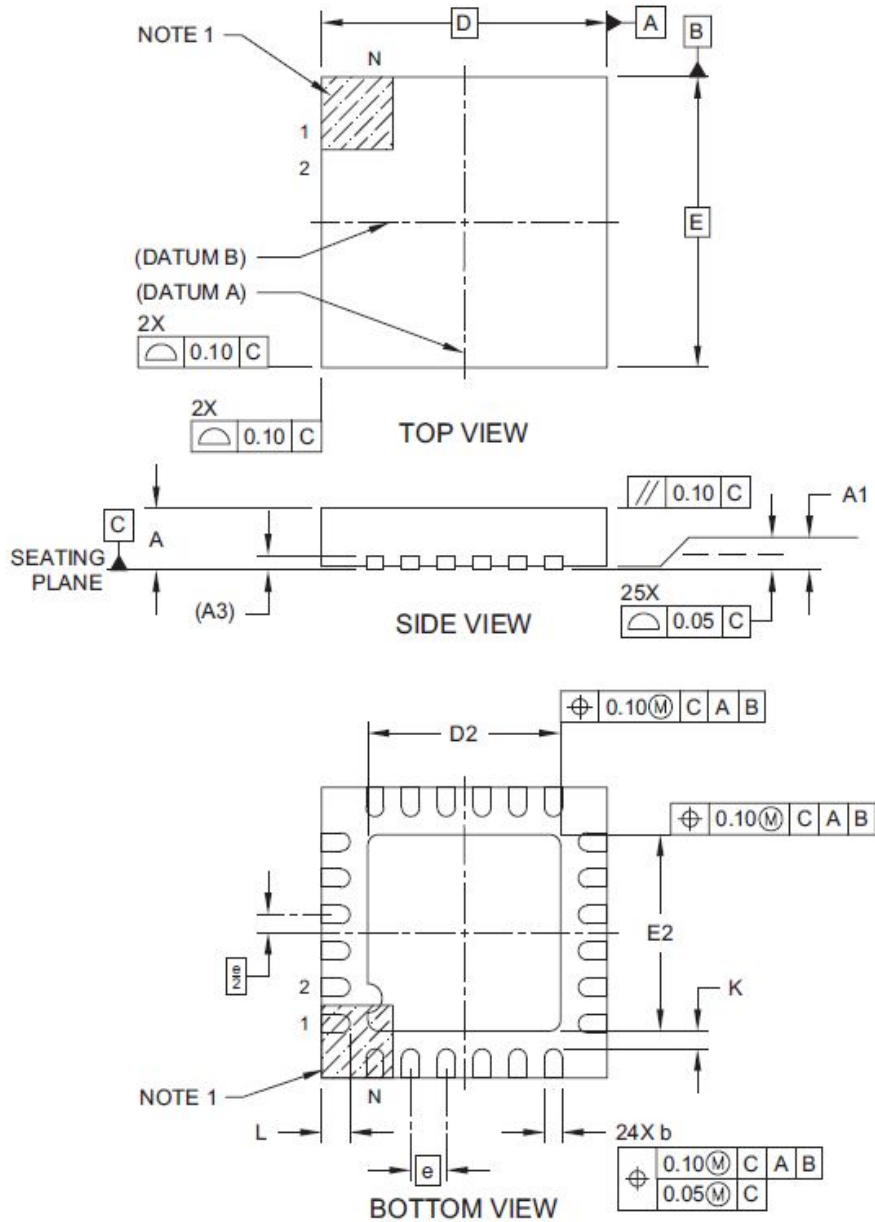
Figure 8. LVDS Output Load and Test Circuit

## Packaging Information

### 24-Lead Very Thin Plastic Quad Flat, No Lead Package (9KX) - 4x4 mm Body [VQFN]

#### With 2.7x2.7 mm Exposed Pad

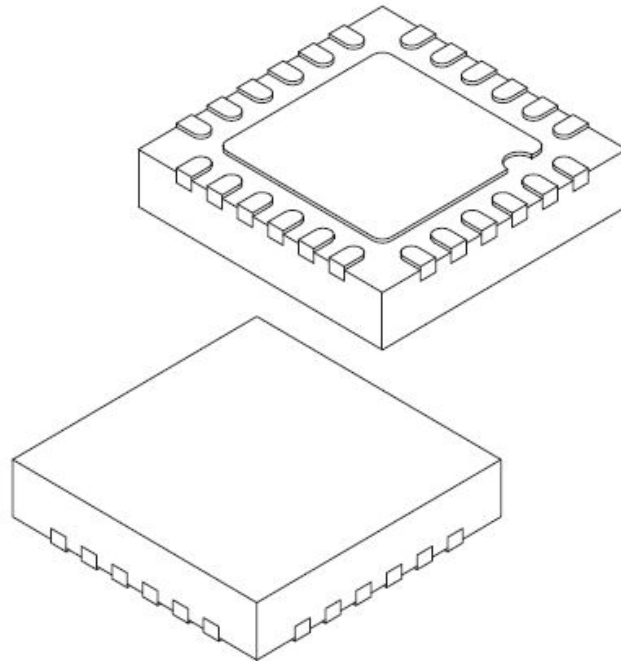
**Note:** For the most current package drawings, please see the Microchip Packaging Specification located at <http://www.microchip.com/packaging>



Microchip Technology Drawing C04-428 Rev A Sheet 1 of 2

### 24-Lead Very Thin Plastic Quad Flat, No Lead Package (9KX) - 4x4 mm Body [VQFN] With 2.7x2.7 mm Exposed Pad

**Note:** For the most current package drawings, please see the Microchip Packaging Specification located at <http://www.microchip.com/packaging>



| Units                   |    | MILLIMETERS |      |      |
|-------------------------|----|-------------|------|------|
| Dimension Limits        |    | MIN         | NOM  | MAX  |
| Number of Terminals     | N  | 24          |      |      |
| Pitch                   | e  | 0.50 BSC    |      |      |
| Overall Height          | A  | 0.80        | 0.85 | 0.90 |
| Standoff                | A1 | 0.00        | 0.02 | 0.05 |
| Terminal Thickness      | A3 | 0.20 REF    |      |      |
| Overall Length          | D  | 4.00 BSC    |      |      |
| Exposed Pad Length      | D2 | 2.60        | 2.70 | 2.80 |
| Overall Width           | E  | 4.00 BSC    |      |      |
| Exposed Pad Width       | E2 | 2.60        | 2.70 | 2.80 |
| Terminal Width          | b  | 0.18        | 0.25 | 0.30 |
| Terminal Length         | L  | 0.35        | 0.40 | 0.45 |
| Terminal-to-Exposed-Pad | K  | 0.25 REF    |      |      |

**Notes:**

- Pin 1 visual index feature may vary, but must be located within the hatched area.
- Package is saw singulated
- Dimensioning and tolerancing per ASME Y14.5M

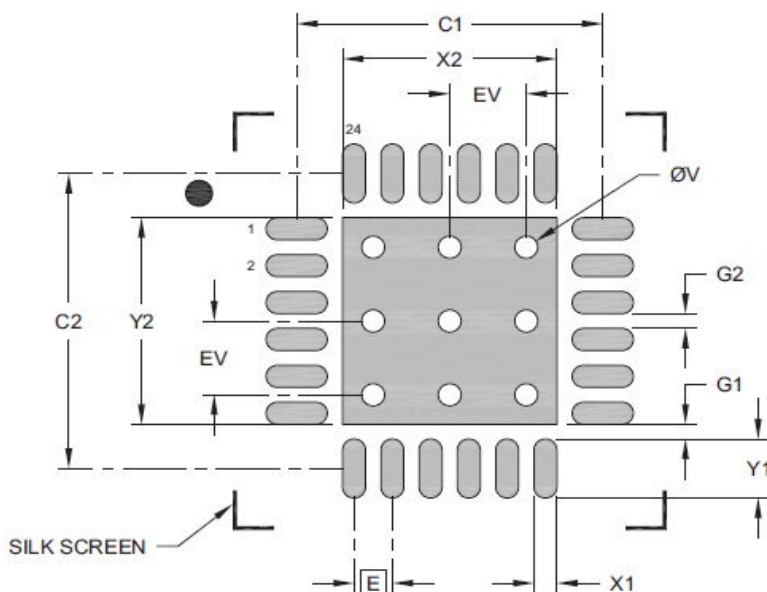
BSC: Basic Dimension. Theoretically exact value shown without tolerances.

REF: Reference Dimension, usually without tolerance, for information purposes only.

Microchip Technology Drawing C04-428 Rev A Sheet 2 of 2

## 24-Lead Very Thin Plastic Quad Flat, No Lead Package (9KX) - 4x4 mm Body [VQFN] With 2.7x2.7 mm Exposed Pad

**Note:** For the most current package drawings, please see the Microchip Packaging Specification located at <http://www.microchip.com/packaging>



### RECOMMENDED LAND PATTERN

| Units                            |    | MILLIMETERS |          |      |
|----------------------------------|----|-------------|----------|------|
| Dimension Limits                 |    | MIN         | NOM      | MAX  |
| Contact Pitch                    | E  |             | 0.50 BSC |      |
| Optional Center Pad Width        | X2 |             |          | 2.80 |
| Optional Center Pad Length       | Y2 |             |          | 2.80 |
| Contact Pad Spacing              | C1 |             | 4.00     |      |
| Contact Pad Spacing              | C2 |             | 4.00     |      |
| Contact Pad Width (X24)          | X1 |             |          | 0.30 |
| Contact Pad Length (X24)         | Y1 |             |          | 0.80 |
| Contact Pad to Center Pad (X24)  | G1 | 0.20        |          |      |
| Contact Pad to Contact Pad (X20) | G2 | 0.20        |          |      |
| Thermal Via Diameter             | V  |             | 0.30     |      |
| Thermal Via Pitch                | EV |             | 1.00     |      |

#### Notes:

- Dimensioning and tolerancing per ASME Y14.5M  
BSC: Basic Dimension. Theoretically exact value shown without tolerances.
- For best soldering results, thermal vias, if used, should be filled or tented to avoid solder loss during reflow process

Microchip Technology Drawing C04-2428 Rev A

Microchip makes no representations or warranties with respect to the accuracy or completeness of the information furnished in this data sheet. This information is not intended as a warranty and Microchip does not assume responsibility for its use. Microchip reserves the right to change circuitry, specifications and descriptions at any time without notice. No license, whether express, implied, arising by estoppel or otherwise, to any intellectual property rights is granted by this document. Except as provided in Microchip's terms and conditions of sale for such products, Microchip assumes no liability whatsoever, and Microchip disclaims any express or implied warranty relating to the sale and/or use of Microchip products including liability or warranties relating to fitness for a particular purpose, merchantability, or infringement of any patent, copyright or other intellectual property right.

Microchip products are not designed or authorized for use as components in life support appliances, devices or systems where malfunction of a product can reasonably be expected to result in personal injury. Life support devices or systems are devices or systems that (a) are intended for surgical implant into the body or (b) support or sustain life, and whose failure to perform can be reasonably expected to result in a significant injury to the user. A Purchaser's use or sale of Microchip Products for use in life support appliances, devices or systems is a Purchaser's own risk and Purchaser agrees to fully indemnify Microchip for any damages resulting from such use or sale.

© 2024 Microchip Technology Inc.